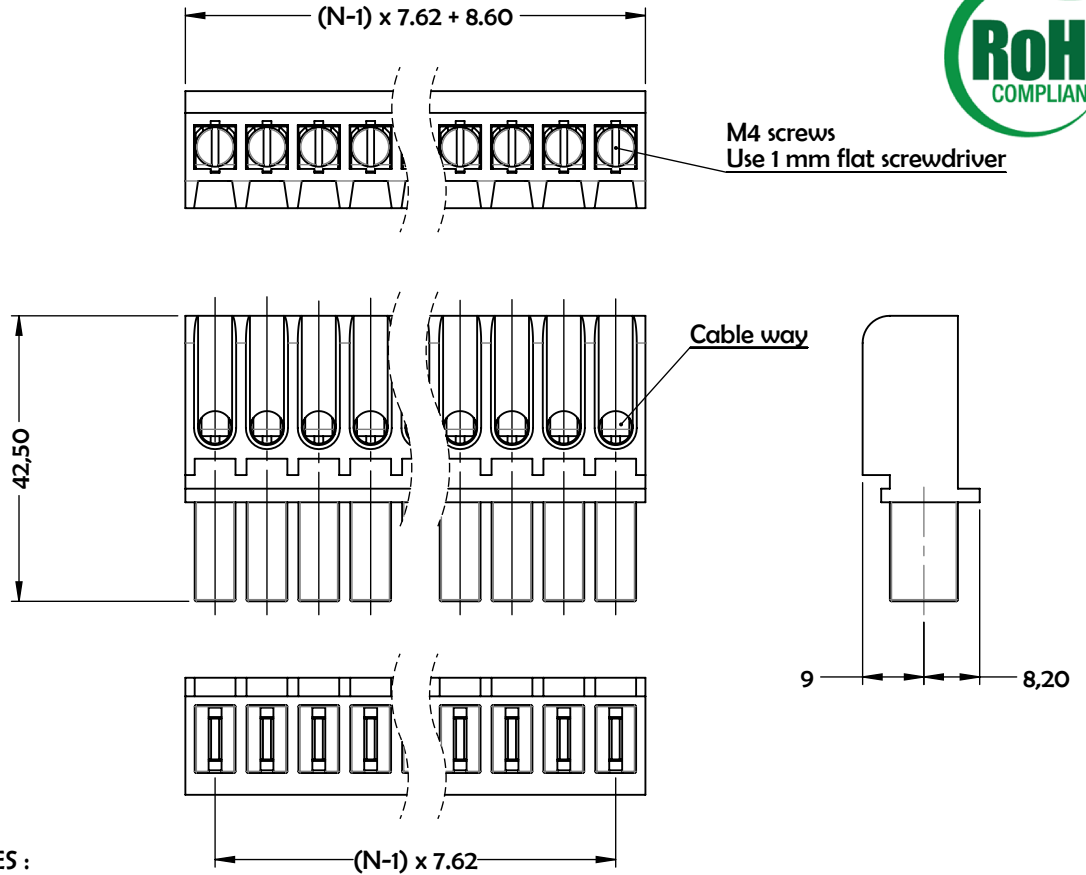




NOTA : N → nb of contacts



MATERIALS & FINISHES :

- Insulating body : White thermoplastic, UL94 V-0
- Contacts and nuts : Brass, nickel plated
- Screws : Steel, nickel plated

TECHNICAL CHARACTERISTICS :

- Nominal current : 15 A
- Nominal voltage : 300 V
- Test voltage between contacts : >5 000 V

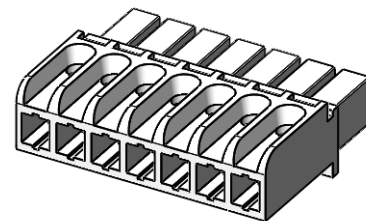
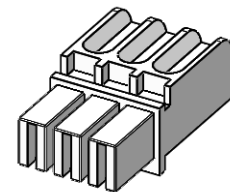
NOTES :

- Cable 7.5 mm² max.
- Laser marking on request
- Must be plugged with TRH 762 M

HOW TO ORDER :

TRH 762 F ##

Number of contacts 1 to 10



This information is given as an indication. In the continual goal to improve our products, we reserve the right to make any modifications judged necessary.

DIMENSIONS : mm [inch are given for information only]



This document is the property of PASMAN, It cannot be reproduced or communicated to a third party without a prior written permission.

www.pasman.fr

TRH762FTD5 - Power TRH plug connector

CREATION				
PROJET :				
NAME : CHEVREAU M.				
DATE : Jul 18th, 2016	Apr 11th, 2016	Nominal voltage added	CHEVREAU M.	VAN DER MEE M.
APPR : VAN DER MEE M.	Aug 03rd, 2016	TRH 762 F & TRH 762 M separated on two TDS	CHEVREAU M.	VAN DER MEE M.
	Jul 29th, 2016	Mistake : tin plated → nickel plated	CHEVREAU M.	VAN DER MEE M.
	Issue	Revisions	Name	Approved